



VP2000

Vapor Phase Soldering Systems High-Performance Inline Systems for Large Series

ASSCON vapor phase reflow soldering systems set standards in soldering technology. The VP2000 inline series are based on advanced patented high-tech soldering methods, and offer outstanding soldering quality in large series production.

VP2000 INLINE

The innovative inline soldering system for large series users is based on the highly successful oxygen-free process used in all ASSCON soldering systems, in which oxygen is excluded from the pre-heating and soldering process. Components are produced in the highest standard of quality. Production is also supported by dynamic profiling – a process for automatically controlling the optimum soldering profile in series production.

The system is designed for bare-board product processing on large series production lines. Electrically width-adjusted conveying systems and center support permit fast straight-forward adjustment for flexible production. The system is modularly designed, and consists of loading station, soldering and cooling zones.

OPTIMUM TEMPERATURE CONTROL

The use of liquid or vapor for as a mean of energy transmission is far more effective than convection. The vapor condenses on the solder product, the condensate encapsulates it completely, and thus transmits the energy. The entire pre-heating and soldering process takes place in an oxygen-free environment. Product overheating, component damage or PCB delamination cannot occur. An optimum temperature is automatically guaranteed at all positions on the product thanks to infinite sensor-based temperature gradient controlling.

PRODUCT BENEFITS

- perfect solder joints thanks to the use of advanced technology
- reproducible process conditions
- no overheating or destruction of electronic components
- low energy costs thanks to smart energy management
- low overall running costs
- full traceability capability
- product changing without waiting times
- dual lane conveying for particularly high processing rates

60 %

less energy
consumption

3.5 kWh

average
energy
consumption*

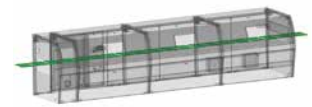
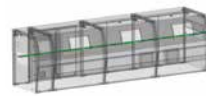
* per h/measured on VP2000-100

VP2000 inline

Vapor Phase Soldering Systems for Large Series

RANGE OF APPLICATION

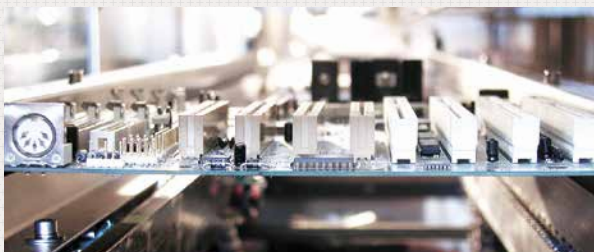
INLINE OPERATION | SERIES PRODUCTION | LARGE SERIES



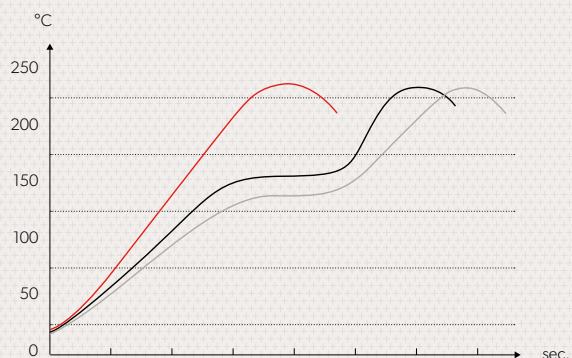
PRODUCT	VP2000-100	VP2000-210/-310	VP2000-410
TECHNICAL DATA			
Transport	single lane	single lane	dual lane
Max. solder product format	750 x 520 mm	600 x 520 mm/620 x 620 mm	620 x 450 mm/620 x 2 x 275 mm
Component height	up to 90 mm	up to 90 mm	up to 90 mm
Ready for use	ca. 30 min	ca. 30 min	ca. 30 min
Connecting power	7 kW	10/15 kW	15 kW

SPECIAL FEATURES

Depending on the version, the VP2000 inline can process products sized from 600 x 520 mm up to 620 x 450 mm/620 x 2 x 275 mm. They achieve high processing rates in inline mode. The systems can be combined with dynamic profiling as series.



The systems are equipped with electrically width-adjusted conveying systems and center support.



The VP2000 inline permit infinite adjustment of specified temperature gradients.

asscon.de

ASSCON Systemtechnik-Elektronik GmbH
Messerschmittring 35 • 86343 Königsbrunn, Germany
P +49 8231.95991.0 • F +49 8231.95991.90