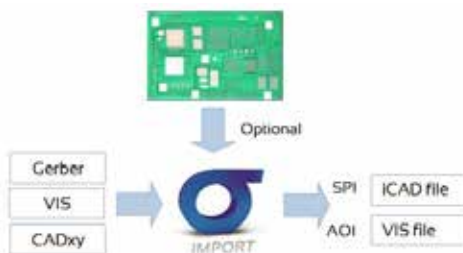




# Ease AOI and SPI programming

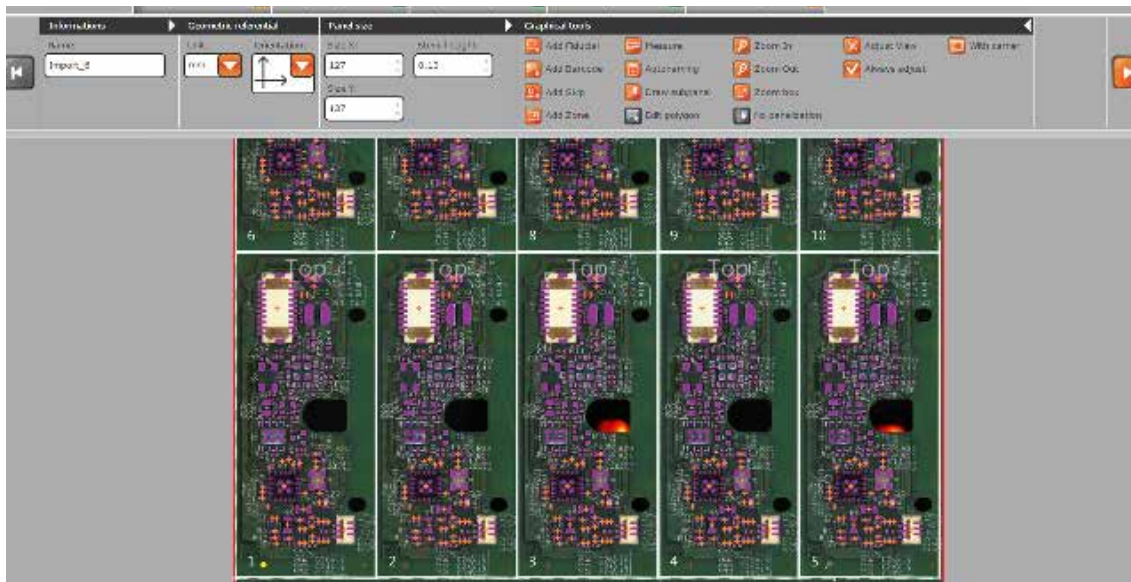
**σ Import (s-100)** is part of SIGMA Link, a web-based software suite to drive SMT process and build knowledge.

**σ Import** generates SPI or AOI input files (iCAD and VIS), from Gerber and CAD x,y.



The machine programming time is drastically reduced; thanks to the panel layout definition, easy data import, panelization, and fiducial settings.

By using **σ Import** you ensure database uniformity between AOI and SPI, simplifying traceability and audit management.



Graphical settings for fiducials, skip marks, ID code, step stencil, carrier zones, glue dots

Automated foot print library generation to associate pads with components (JEDEC)

Extremely reduced programming time

Easy creation for multi-CAD XY, multisource files



# Ease AOI and SPI programming

## Benefits

### Quick panel layout definition

Panel and sub-panel layout can be done by cropping the shape directly on PCB image.



### Automatic foot print library

Association between pad and component centroid is automated by using a footprint library.



### Fast panelization

Sub-panel layouts and orientation are easily set and very helpful for complex panelization.



### Gerber (R274X) import

Gerber files can be read to import necessary information for SPI.



## Specifications

Installation	Dedicated offline workstation
PC configuration	Pentium dual core 2.2 GHz, 8 Gb RAM, ethernet 100Mbps/s Graphics card (1 Go min., 2 Go for optimal performances)
Operating system	Windows 7 or later
Screen configuration	22" wide screen with 1680x1050 resolution

IMPORT EN Rev 05 10-2015

**Vi TECHNOLOGY**  
Europe, Middle-East & Africa  
France (Headquarters) ; Tel: + 33 4 76 75 85 65  
sales.europe@vitechnology.com

**Asia & Pacific**  
Singapore; Tel: + 65 6747 6550  
China ; Tel: + 86 755 82124147  
sales.asia@vitechnology.com

**Americas**  
United States ; Tel: + 1 972 235 1170  
sales.americas@vitechnology.com

