

MODEL: BS1300 / BS1400 SEMI / FULLY AUTOMATIC SMT STENCIL PRINTER



SUMMARY

- Precision Printing for 0.3 mm fine pitch QFP
- Built in Overlay Pattern Vision Alignment Software
- AT-align fully automatic fiducial finding and PCB board offset adjustment system (for Model BS1400)
- Flexible Mounting Table for Single & Double side PCB
- High Accuracy & Repeatable Printing
- Double Squeegee with dual stroke control
- Windows XP Software

The **Model BS1300** is a economic and accurate semi-automatic SMT stencil printer, suitable for small and medium volume production. Including the dual camera system with OPVA software, the ultra-fine pitch printing for 0.3 mm QFP IC is easy to obtain.

The **Model BS1400** is a very accurate fully automatic SMT stencil printer. It includes a powerful AT-align automatic fiducial finding and PCB board offset adjustment system. After pressing the start key, the PCB alignment and printing process will be fully automatic, which is very suitable for precision batch printing.

MODEL: B1300 / BS1400
SEMI / FULLY AUTOMATIC
SMT STENCIL PRINTER



AUTOTRONIK
Fertigungssysteme für die Elektronikindustrie

AUTOTRONIK-SMT GmbH
Sulzbacher Str. 111
92224 Amberg, Germany
tel +49 (0) 9621-600 691
fax +49 (0) 9621-600 692
mail office@autotronik-smt.com
www.autotronik.de

DETAILS

Overlay Pattern Vision Alignment (OPVA) Software

OPVA software is specially design for BS1300, the user can align the live image of the PCB to a computer generated overlay pattern. Any fiducial point or PCB pad can be selected as the reference for the overlay pattern, the shape and size of the overlay pattern is selectable, the center of the overlay pattern can be high accurately located by simple single step movement on the computer screen with the resolution of 0.0085 mm per step. PCB can be aligned easily within a few seconds by user.

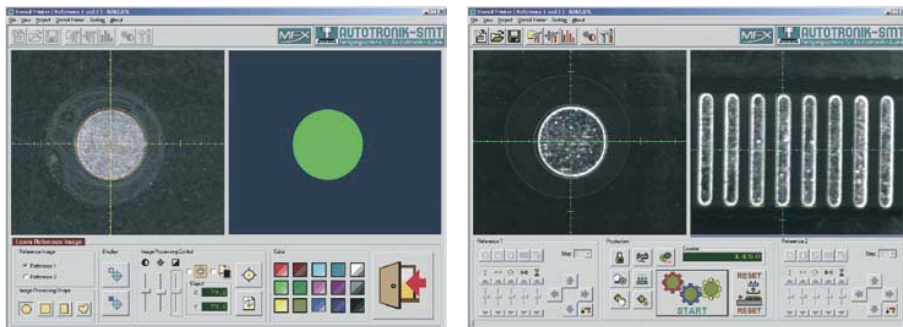
High Accuracy & Repeatable Printing

PCB is fixed on a flexible mounting table which is suitable for single side and double PCB. Adjustment of PCB position, movement of Mounting table and squeegee are all moving on precision linear guides to provide high accuracy & repeatable movement. Double squeegee with dual stroke control system provide efficient saving of solder paste during printing.

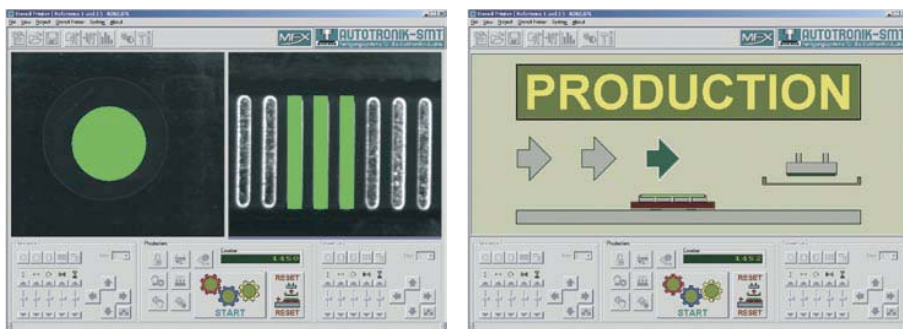
Control System

The main control of BS1300/BS1400 is by Industrial computer with LCD monitor, the software is working under Windows XP operating system and it is a graphical user friendly software, easy and simple operation.

With OPVA Software for PCB alignment, users can align the PCB within few seconds



The on-screen process status shows the detail of operation by graphic, simple operation and user friendly.



AT-align powerful software can auto finding fiducial points and auto adjust PCB offset.

SPECIFICATION

- Printing Speed: 10 - 100 mm/s (Servo Control)
- Table Up/Down Speed: 0,5 mm/s - 5 mm/s (Servo Control)
- Cycle Time: 15 - 25 sec./PCB
- Vision Alignment System:
 - BS1300: Semi-auto PCB Alignment (OPVA)
 - BS1400: fully-auto PCB Alignment (AT- Align)
- Stencil Frame Size: 450 x 450 mm – 736 x 736 mm
- Printing Area: Max. 400 x 400 mm, 500 x 400 mm (optional)
- Board size: Min. 20 x 20 mm, Max. 400 x 380 mm, 500 x 380 mm (optional)
- Board thickness: 0,2 mm - 8 mm
- Underside Clearance: Max. 26 mm
- Printing Stroke: Max. 450 mm
- Squeegee Pressure: 0 -15 kg
- Blade Type:
 - Standard Length: 250 mm
 - Optional Length: 200 mm - 500 mm)
- XY Adjustment: ± 5 mm
- Radial Adjustment: $\pm 2^\circ$
- Registration Repeatability: ± 0.01 mm
- Support Tooling: Magnetic pin & Vacuum Block
- Camera: 2 set of B/W CCD camera
- Vision Alignment Resolution: 0,0085 mm / step
- Vision Fiducial:
 - Standard Fiducial, any Pads, IC foot Pads
- Main Control: Industrial PC
- Machine Size: 1550 x 900 x 1350 mm (L x W x H)
- Weight: 400 kg
- Power: 230 V / AC, 500 W
- Pressure: 75psi (5,5 bar)

We reserve the right to make changes without notice.