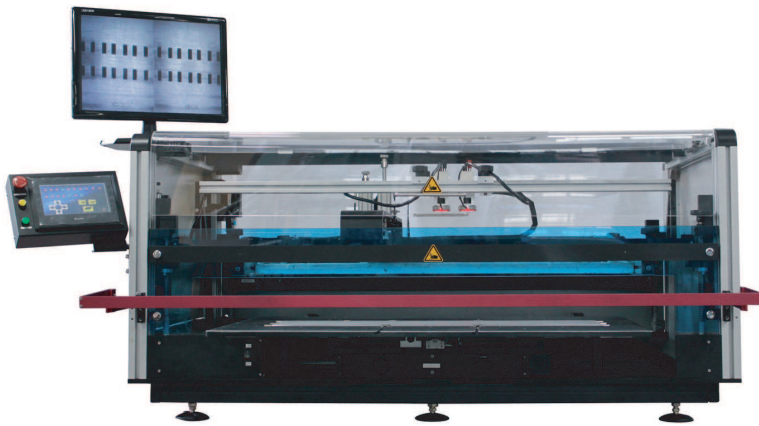


MODEL: SP900 / SP900L SEMI-AUTOMATIC STENCIL PRINTER



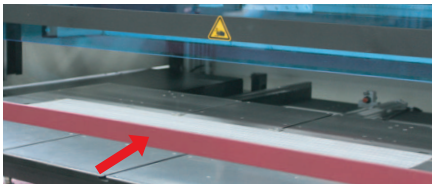
FEATURES

- **Huge print area capability**
The huge print area capability allows printing up to 900mm x 600 mm (SP900L), or up to 900mm x 400mm (SP900). It accepts standard SMT frame sizes from 350mm x 350mm to 1140mm x 750mm (SP900L), or to 1140mm x 550mm (SP900)
- **Vertical Separation of Stencil from PCB**
4 corner ball screw system provides excellent separation control of stencil for high quality solder paste printing
- **Programable Speed Control for both squeegee movement and stencil separation**
- **Dual Camera system for quick PCB alignment (optional)**

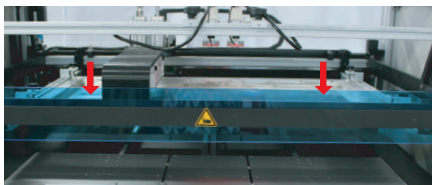
EASY STEPS

Step 1: Place the PCB board on the slidable working table

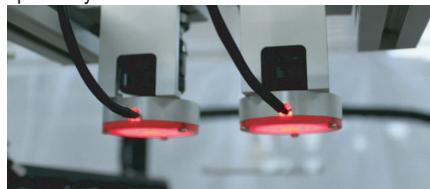
Step 2: By pressing IN button, the working table will move toward inside automatically



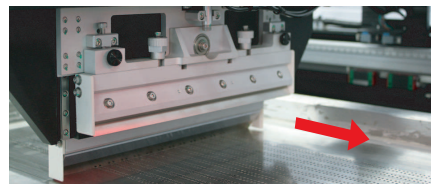
Step 3: By pressing DOWN button, the stencil screen will move downward automatically



Step 4: By using magnifying camera, the operator can adjust the X, Y, Theta alignment easily and precisely



Step 5: By pressing START button, the squeegee will spread the solder paste steadily and automatically



SPECIFICATION



SP900L

- Stencil frame size:
350 x 350mm to 1140 x 750mm
- Printing Area:
Max.900mm x 600mm
- Board size:
Max.910mm x 610mm
- X- and Y-Axes range: +/- 13 mm
- Theta rotation: +/- 3.5°
- Underside Clearance: 25 mm
- Z-axis range: 0 - 45 mm
- Registration Repeatability: +/- 0.01 mm
- Overall dimensions(L x W x H):
1702mm x 1323mm x 1051mm
- Machine weight: 185kg

SP900

- Stencil frame size:
350 x 350mm to 1140 x 550mm
- Printing Area:
Max.900mm x 400mm
- Board size:
Max.910mm x 410mm
- X- and Y-Axes range: +/- 13 mm
- Theta rotation: +/- 3.5°
- Underside Clearance: 25 mm
- Z-axis range: 0 - 45 mm
- Registration Repeatability: +/- 0.01 mm
- Overall dimensions(L x W x H):
1702mm x 1123mm x 1051mm
- Machine weight: 155kg

We reserve the right to make changes without notice.



AUTOTRONIK-SMT GmbH
Sulzbacher Str. 111
92224 Amberg, Germany
tel +49 (0) 9621-600 691
fax +49 (0) 9621-600 692
mail office@autotronik-smt.com
www.autotronik-smt.de