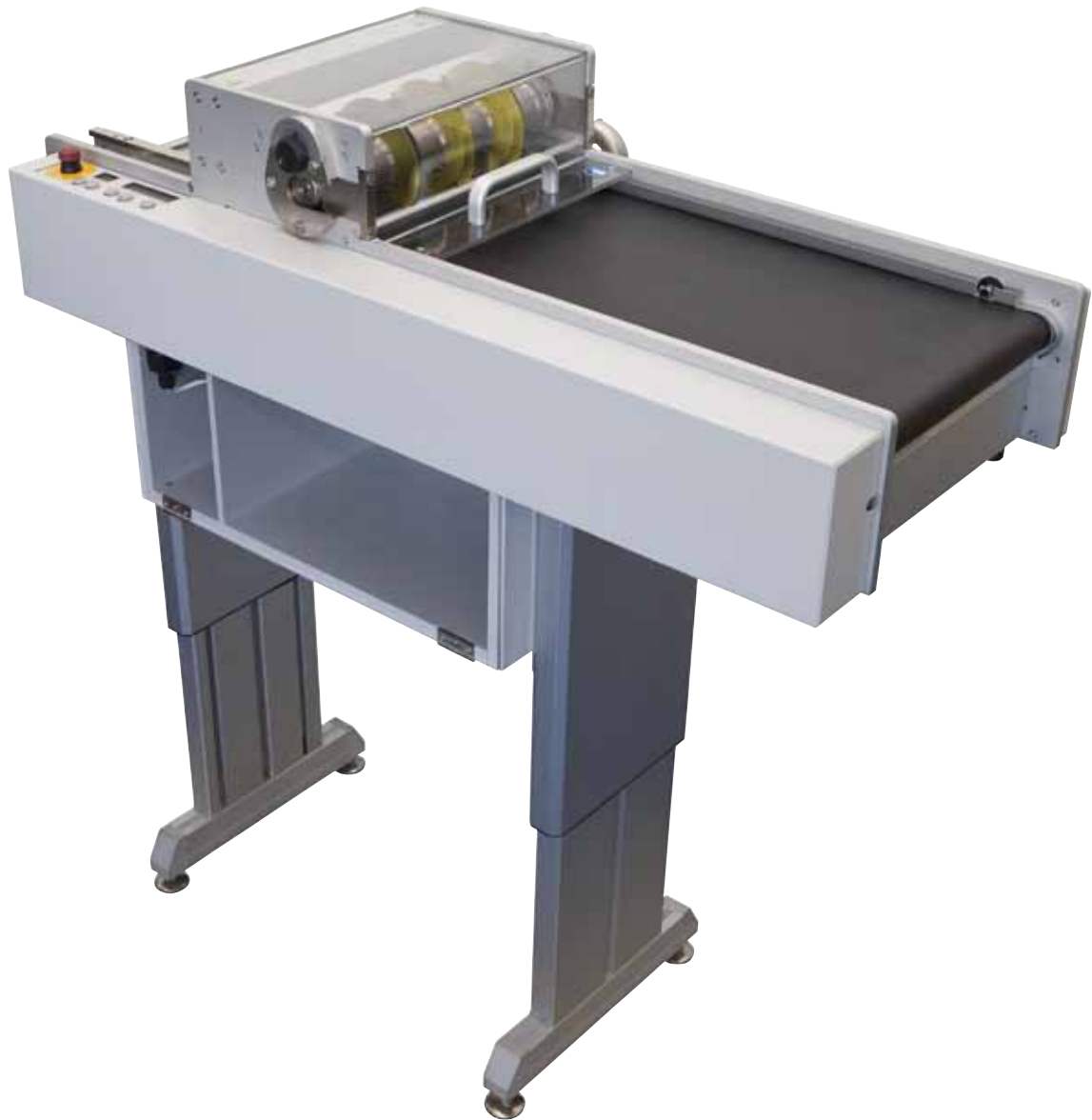


# PCB Separator MAESTRO 5L



## MAESTRO 5L with frame

is used most economically whenever large numbers of pre-scored PCBs need to be separated. The well-arranged control panel ensures easy operation.

Machine with frame - adjustable in height for optimal modification for each application.

PCB thickness A	1.0 - 3.2 mm
Remaining PCB thickness B	typical 1/3 of Dim. A min. 0.3 mm, max. 0.6 mm
Depth of scoring C	min. 0.3 mm
Increase in external dimensions after separation	0.1 - 0.2 mm
The pre-scored grooves can be interrupted by cutouts with a length of up to approx. 5 mm.	

# PCB Separator MAESTRO 5L



## MAESTRO 5L

PCB panels with maximum width of 300 mm can be separated by up to 11 pairs of circular blades simultaneously. Configuration of the blades is adjusted to your individual PCB also the cover and the guide.

Sensors are used to monitor the separating process. The PCBs are placed by either by hand or they feed automatically by a loading station. The machine can also be installed in an assembling line. The SMEMA interface is the standard connection for use. New: every machine is automatically prepared for dust extraction and with cleaning brushes for rear-end conveyor.

Technical Data	
Separation type	Component side circular blade Solder side circular blade
Operation	motorized
Separation speed	100 - 220 mm/s in 10 steps
Length of PCB panel with light barrier activated with light barrier de-activated	100 - 570 mm > 100 mm
Width of PCB panels	max. 300 mm
Width off-cut	min. 3 mm
Height of components	Component max. 30 mm Solder side max. 10 mm
Number of circular blades	max. 11 on each shaft
Width of PCBs	10 - 290 mm
Display	- Separation speed - Separated length or numbers of PCB panels
Keys	- Start, stop, reverse - Setting of separated speed
Monitoring	- Detection of separation length - Accumulation in front of and behind the blades - Stop the end of the conveyor belt
Interfaces	- Remote start/stop - SMEMA (round 14 pins)
Mains voltage	230 /115 V~ 50 - 60 Hz
Operating temperature	10 - 35° C
Storage/transport temp.	-20 - 50° C
Humidity not condensing	10 - 85%
Weight	63 kg
Dimensions with base	height 750 - 1000 mm width 440 mm dept 1100 mm

Part No.	Description	
8934520	PCB Separator MAESTRO 5L Contents of delivery: MAESTRO 5L with base prepared for dust extraction Circular blades on customer request Service tools	
Part No.	Consumables	PU
8934803.001	Circular blade width 8 mm	1



- *Headquarters in Germany*
- *cab subsidiaries*  
*350 distribution partners*  
*in more than 80 countries.*

*cab is represented in every active commercial center - worldwide.*



## [www.cab.de](http://www.cab.de)

### Germany

cab Produkttechnik  
GmbH & Co KG  
Postfach 1904  
76007 Karlsruhe  
Wilhelm-Schickard-Str. 14  
76131 Karlsruhe  
Telefon +49 721 6626-0  
Telefax +49 721 6626-249  
[www.cab.de](http://www.cab.de)  
[info@cab.de](mailto:info@cab.de)

*Representatives in other countries on request.*

### France

cab technologies s.a.r.l.  
67350 Niedermodern  
Téléphone +33 388 722 501  
[www.cab.de/fr](http://www.cab.de/fr)  
[info.fr@cab.de](mailto:info.fr@cab.de)

### USA

cab Technology Inc.  
Tyngsboro MA, 01879  
Phone +1 978 649 0293  
[www.cab.de/us](http://www.cab.de/us)  
[info.us@cab.de](mailto:info.us@cab.de)

### South Africa

cab Technology (Pty.) Ltd.  
2125 Randburg  
Phone +27 11-886-3580  
[www.cab.de/za](http://www.cab.de/za)  
[info.za@cab.de](mailto:info.za@cab.de)

### Asia 亚洲

cab Technology Co, Ltd.  
**希爱比科技股份有限公司**  
Junghe, Taipei, Taiwan  
Phone +886 2 8227 3966  
[www.cab.de/tw](http://www.cab.de/tw)  
[info.asia@cab.de](mailto:info.asia@cab.de)

### China 中国

cab (Shanghai) Trading Co., Ltd  
**铠博(上海)贸易有限公司**  
Phone +86 21 6236-3161  
[www.cab.de/cn](http://www.cab.de/cn)  
[info.cn@cab.de](mailto:info.cn@cab.de)

*This documentation and any translations hereof are the property of cab GmbH & Co KG.*

*The replication, processing, reproduction or distribution in whole or in parts requires our prior written consent. © Copyright bei cab/9008452.*

*All delivery, design and technical specifications are compiled to the best of our current knowledge and are subject to change without prior notice.*